

# MONTHLY MEMBERSHIP PROGRESS REPORT

LOCATION WEST VIRGINIA

District 29 I

Results as of: 6/30/2021

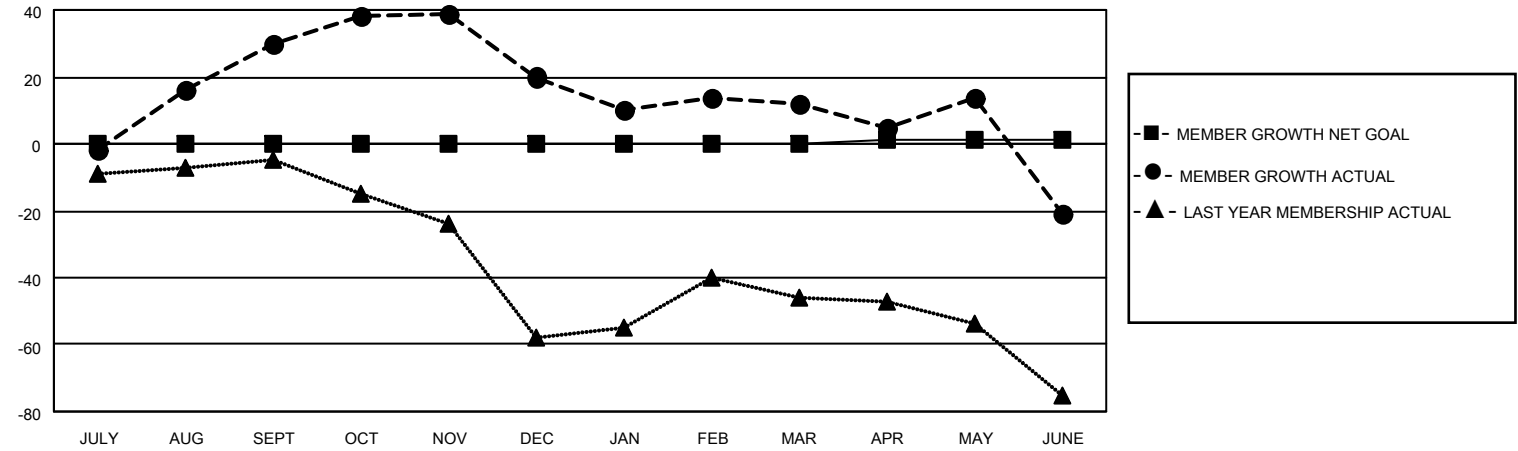
Clubs			
RESULTS FOR 2020-2021			
QUARTER	NEW CLUB GOAL	NEW CLUBS	DROPPED CLUBS
JULY/AUG/SEPT	0	0	0
OCT/NOV/DEC	0	0	0
JAN/FEB/MAR	1	0	0
APR/MAY/JUNE	0	0	0

Members			
RESULTS FOR 2020-2021			
QUARTER	MEMBER GROWTH NET GOAL	MEMBER GROWTH ACTUAL	DROPPED MEMBERS ACTUAL (including transfers)
JULY/AUG/SEPT	0	46	15
OCT/NOV/DEC	0	26	32
JAN/FEB/MAR	0	13	21
APR/MAY/JUNE	1	39	67

**GOALS AND ACTUAL NEW CLUBS CUMULATIVE**



**GOALS AND ACTUAL MEMBERS CUMULATIVE**



DROPPED CLUBS: 0	28 CLUBS OF 56 ADDED 1 OR MORE NEW MEMBERS	<u>GENDER DISTRIBUTION</u>
<u>DROPPED MEMBERS</u>	<a href="#">CLICK HERE FOR CUMULATIVE MEMBERSHIP DATA</a>	MALE            964 (64.22%)
DECEASED            39		FEMALE         537 (35.78%)
CLUB CANCELLED     0		TOTAL FAMILY UNIT MEMBERS            462
OTHER                 96		FAMILY MEMBERS PAYING HALF DUES            236
<b>TOTAL                 135</b>		